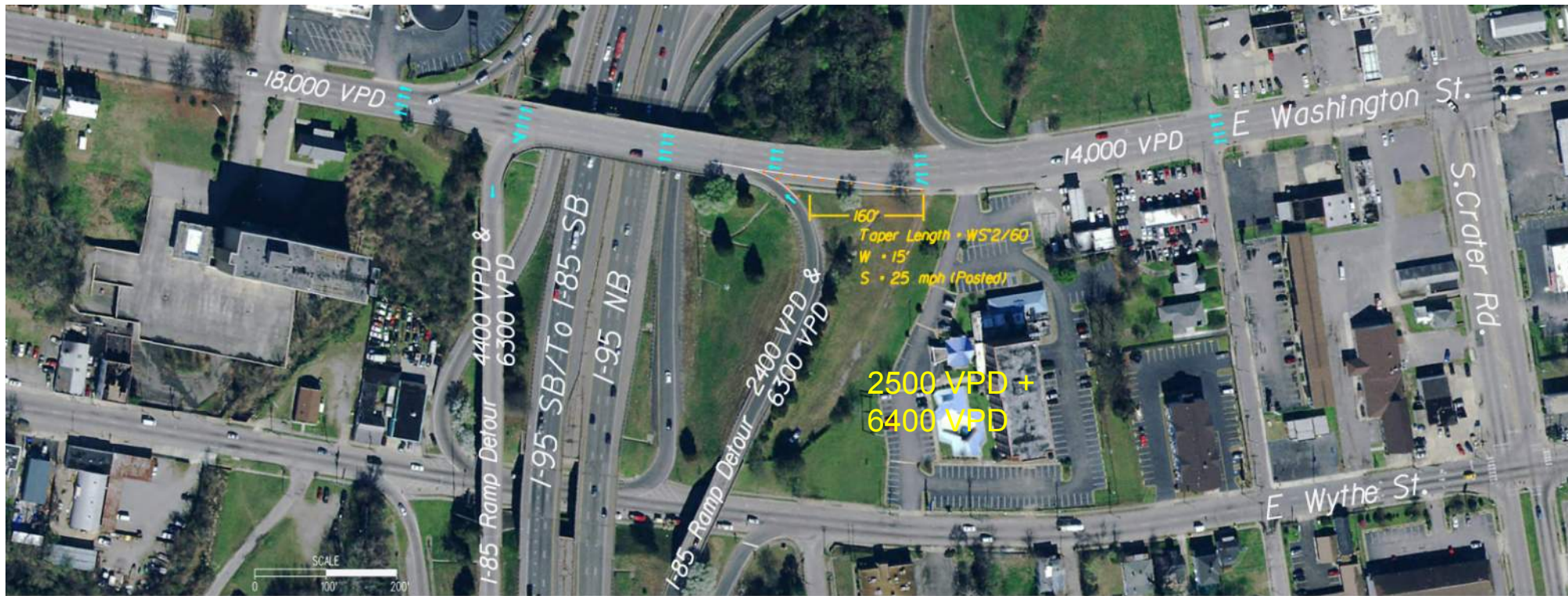




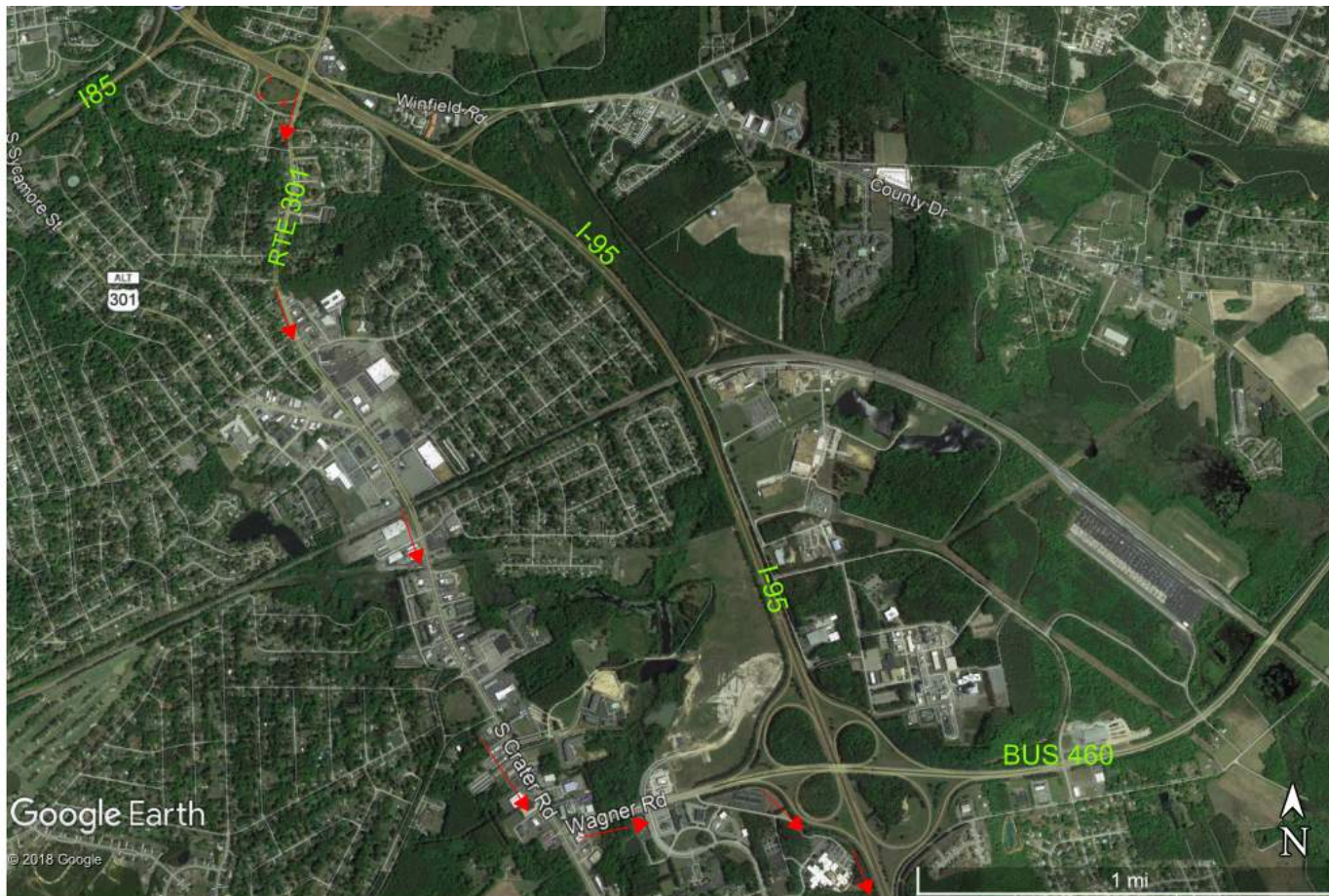
I-85 NB OFF-RAMP TO I-95 SB DETOUR

- 6,400 ADT
- Close I-85 NB off-ramp
- Direct traffic north on I-85
- Exit traffic at Exit 69 - Washington Street
- Turn traffic left onto Washington Street (one-way traffic)
- Turn traffic left onto I-95 SB on-ramp
- Merge traffic onto I-95 SB



WASHINGTON STREET LANE CLOSURE

- Required to accommodate I-85 Ramp Detour
- Close the leftmost travel lane prior to the I-95 NB off-ramp terminus
- Allow free flow movement from I-95 NB off-ramp across Washington Street Bridge to I-95 SB on-ramp



ROUTE 301 SB TO I-95 SB ON-RAMP DETOUR

- 700 ADT
- Detour traffic SB on Route 301
- Turn traffic left at Wagner Road
- Turn traffic right onto I-95 SB on-ramp
- Merge onto I-95 SB

ROUTE 301 SB OFF RAMP DETOUR

- Exit Route 301 SB Off Ramp and Graham Road traffic off at E. Wythe St.
- Turn left onto E. Wythe St.
- Turn traffic left onto Windfield Rd
- Turn traffic right, back onto Route 301



ROUTE 460 BUS DETOUR

- Detour traffic destined to Route 460 BUS from I-95 SB mainline.
- Exit traffic onto Wagner Road
- Turn traffic left Route 460 BUS.

