

# US 360 Arterial Management Plan Corridor Recommendations Sheet 17



## Intersections and Median Crossovers

**I.43 US 360 at median opening west of Circle Drive (MM 111.29)**

- Add deer crossing sign

**I.44 US 360 at median opening west of Circle Drive (MM 111.48)**

- Convert to directional median opening
- Extend all turn lanes to meet standard
- Systematic safety improvements (Improve signing and marking)
- Consolidate driveways

**I.45 US 360 at Circle Drive**

- Close median opening

**I.46 US 360 at median opening east of Circle Drive (MM 112.02)**

- Close median opening

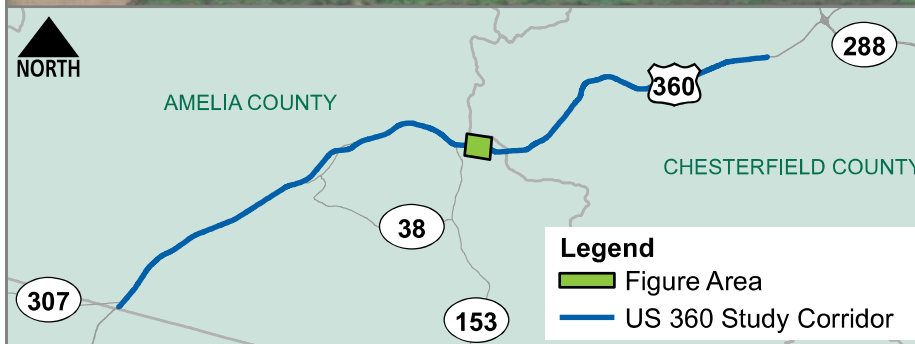
**I.47 US 360 at median opening east of Circle Drive (MM 112.178)**

- Extend all turn lanes to meet standard
- Systematic safety improvements (Improve signing and marking)

## Roadway

**R.4 US 360 from MM 111.48 to MM 111.671**

- Consolidate driveways



## Legend | Amelia County Roadway, Intersection, and Median Crossover Recommendations

**DRAFT**

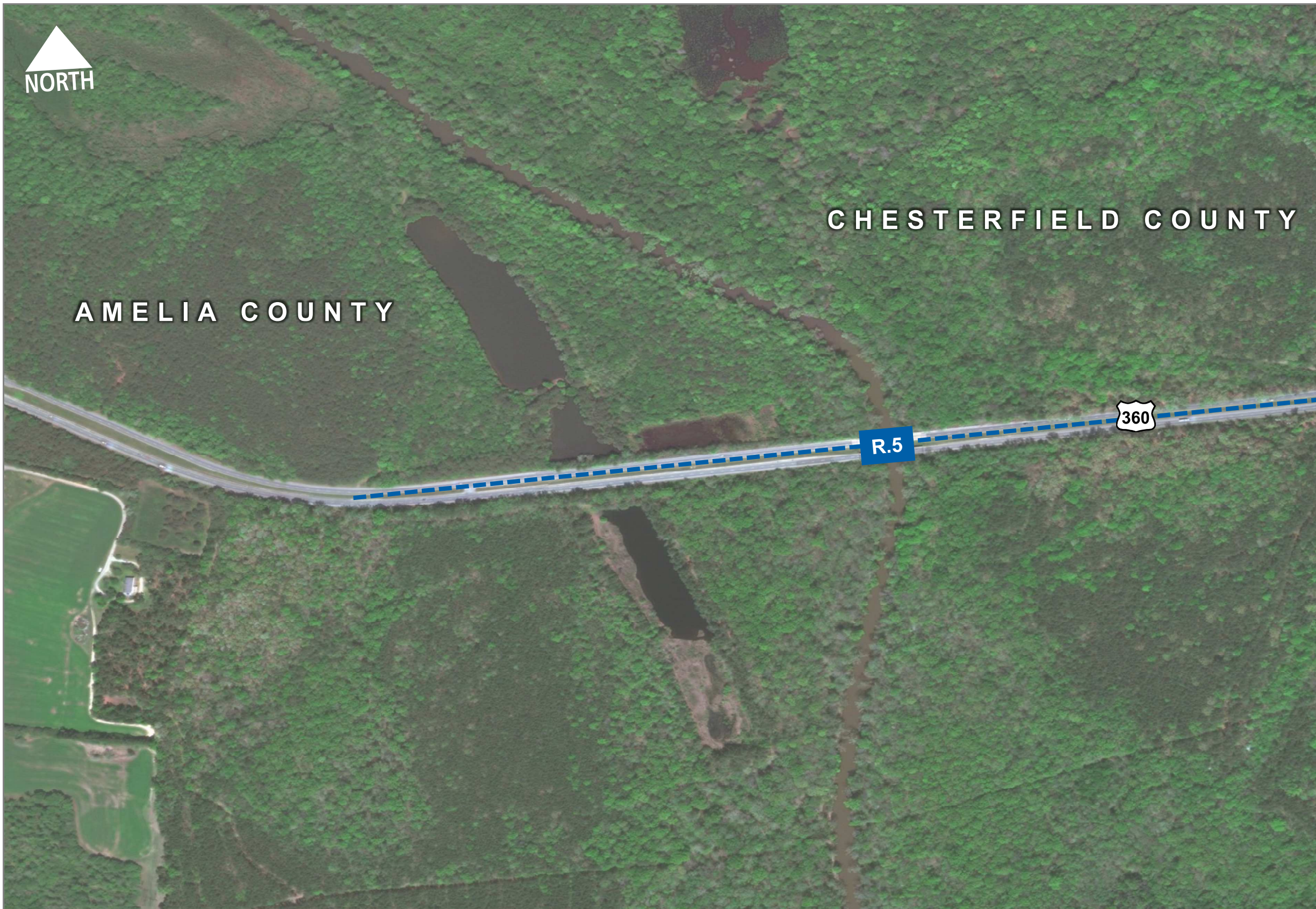
### Recommendation

- I.#** Intersection Number
- R.#** Roadway Segment Number

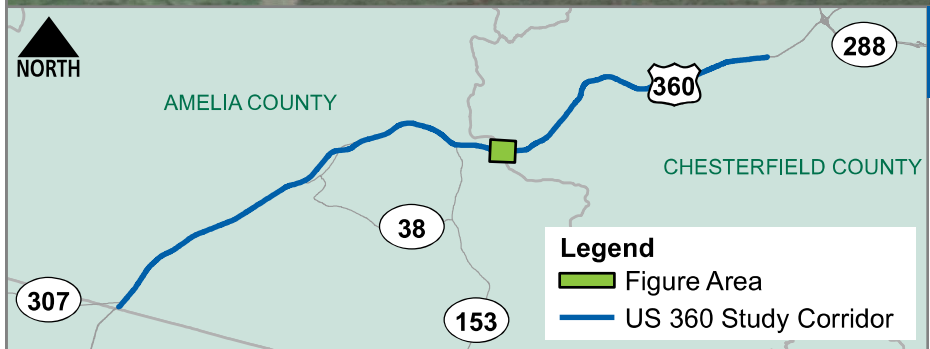
### Existing Deficiency

- Geometry
- Access Management
- Safety
- Traffic Operations



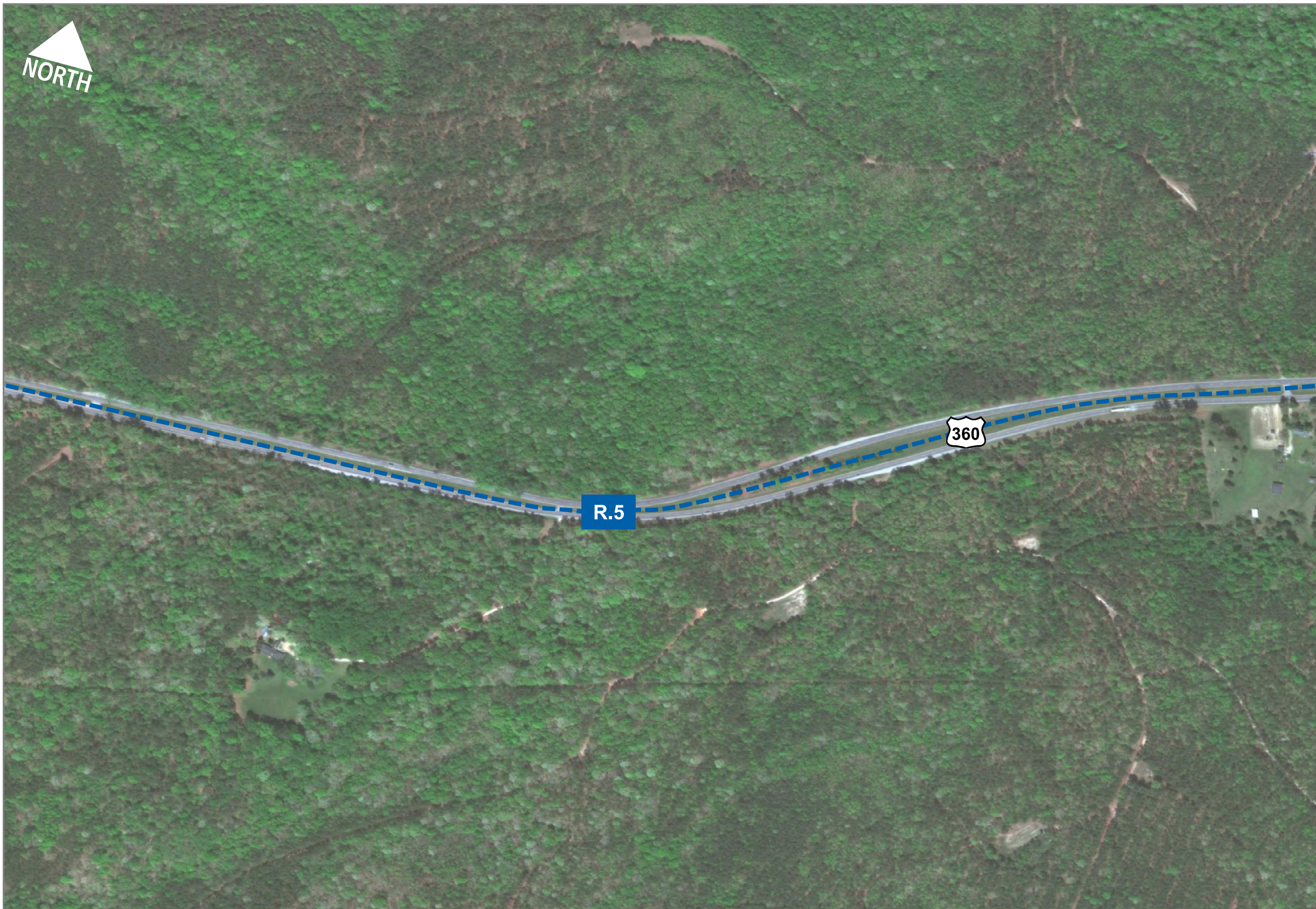


- Roadway**  
R.5 US 360 from MM 112.56 to east of Doss Road
- Improve shoulders
  - Install rumble strips



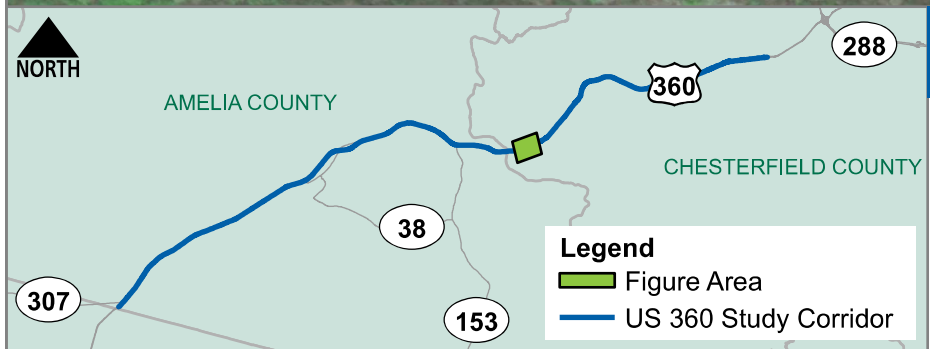
**Legend | Amelia County Roadway, Intersection, and Median Crossover Recommendations** **DRAFT**

Recommendation		Existing Deficiency	
I.#	Intersection Number	Geometry	Safety
R.#	Roadway Segment Number	Access Management	Traffic Operations



**Roadway**  
**R.5 US 360 from MM 112.56 to east of Doss Road**

- Improve shoulders
- Install rumble strips



**Legend | Chesterfield County Roadway, Intersection, and Median Crossover Recommendations** **DRAFT**

Recommendation		Existing Deficiency	
<b>I.#</b>	Intersection Number	Geometry	Safety
<b>R.#</b>	Roadway Segment Number	Access Management	Traffic Operations

**Intersections and Median Crossovers**

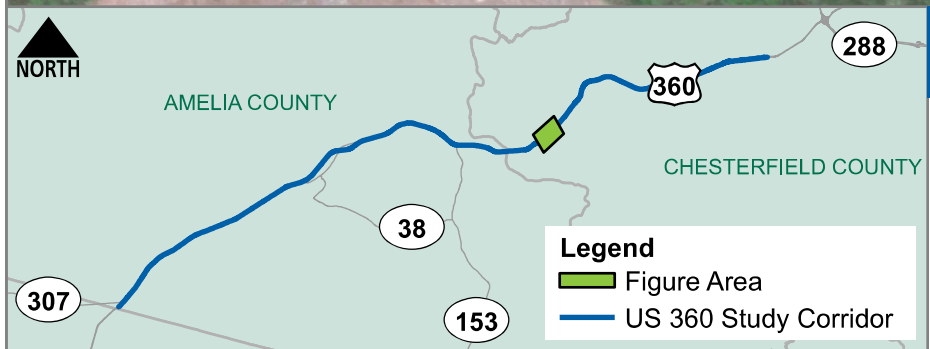
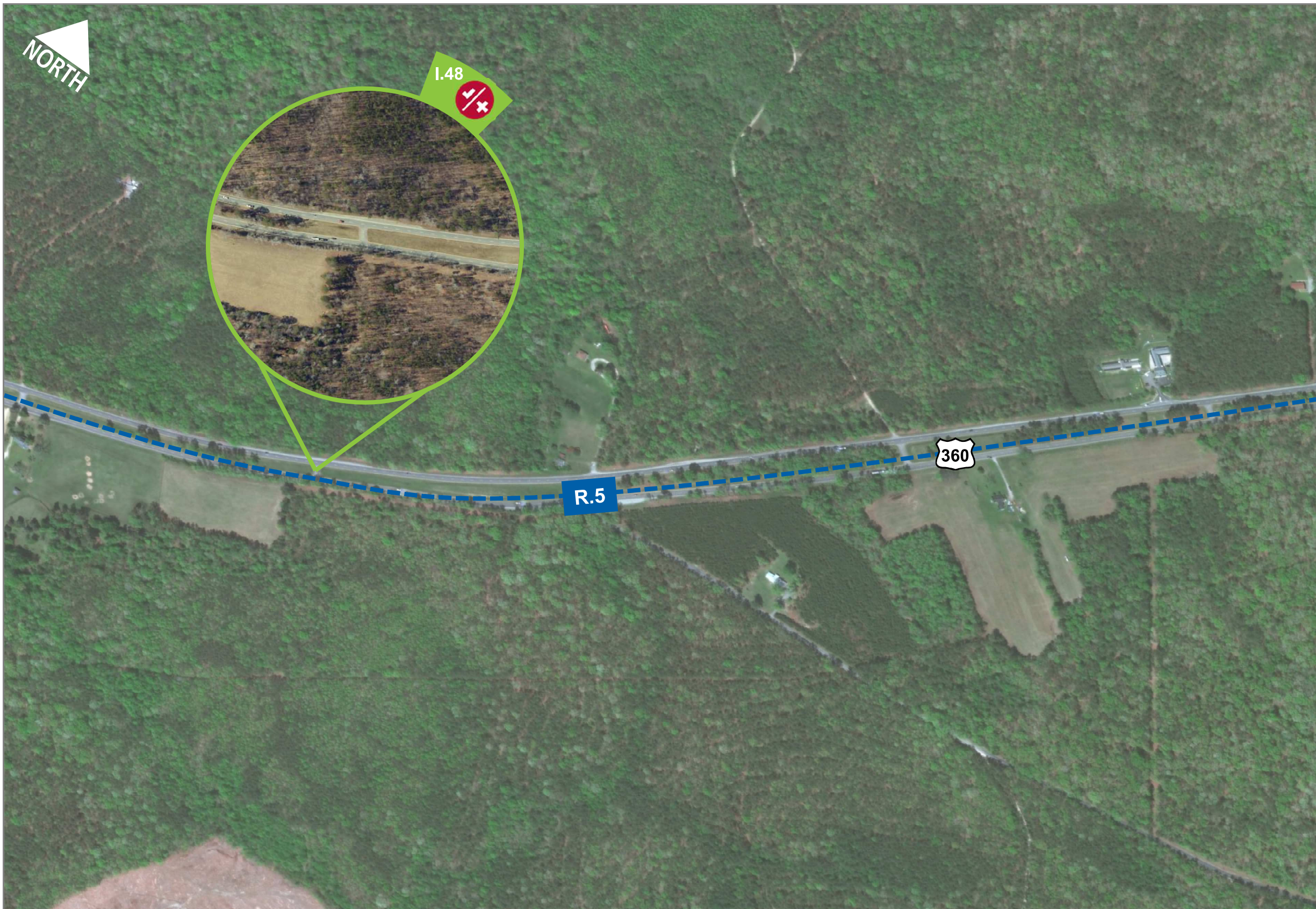
**I.48 US 360 at Median Opening at MM 114.36**

- Close median opening

**Roadway**

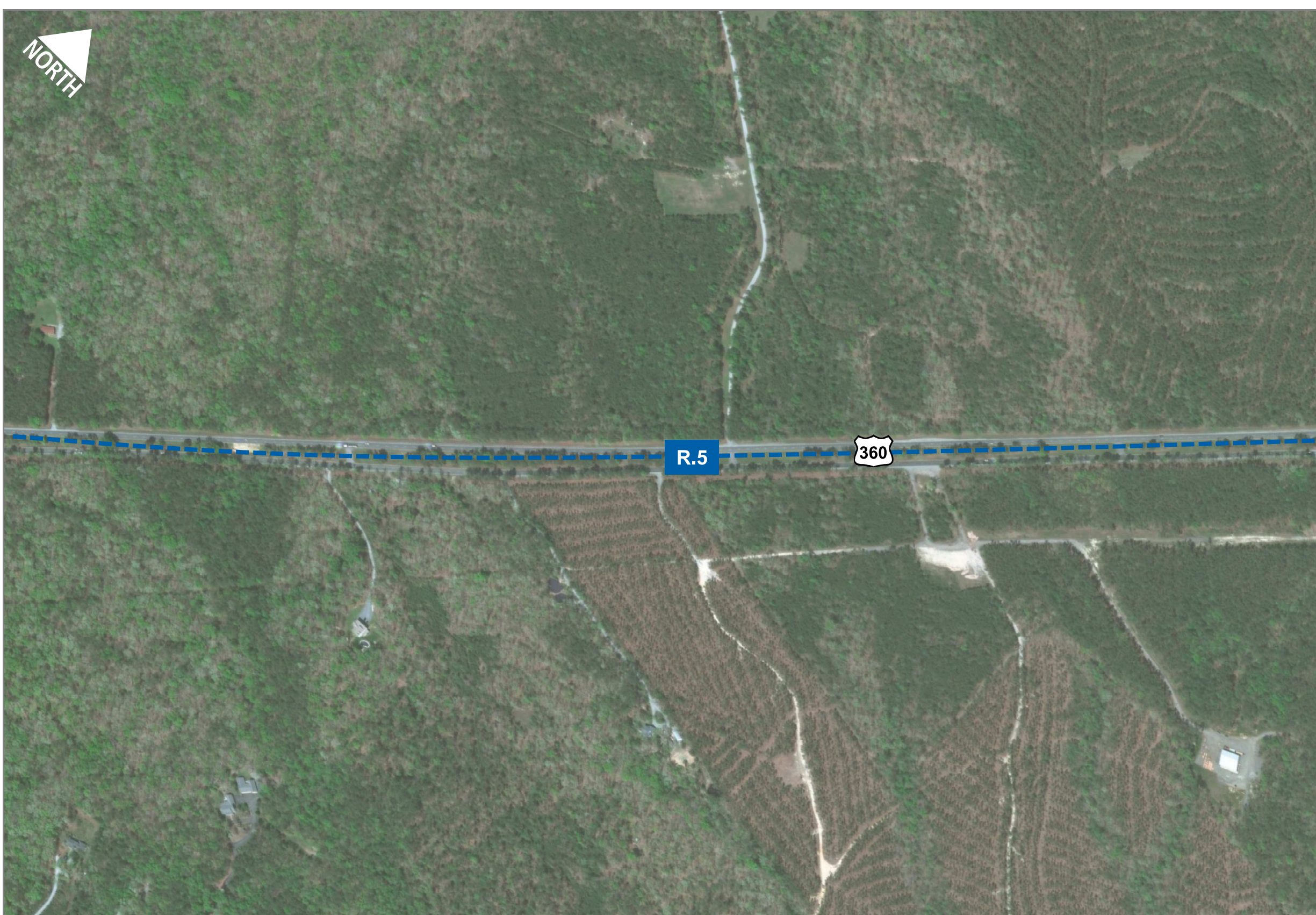
**R.5 US 360 from MM 112.56 to east of Doss Road**

- Improve shoulders
- Install rumble strips



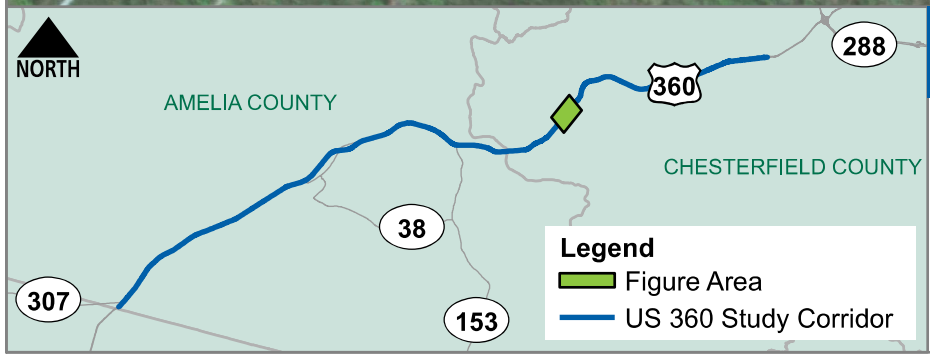
**Legend | Chesterfield County Roadway, Intersection, and Median Crossover Recommendations** **DRAFT**

Recommendation		Existing Deficiency	
<b>I.#</b>	Intersection Number	Geometry	Safety
<b>R.#</b>	Roadway Segment Number	Access Management	Traffic Operations



**US 360 Arterial Management Plan  
Corridor Recommendations  
Sheet 21**

- Roadway**  
**R.5 US 360 from MM 112.56 to east of Doss Road**
- Improve shoulders
  - Install rumble strips



**Legend | Chesterfield County Roadway, Intersection, and Median Crossover Recommendations** **DRAFT**

Recommendation		Existing Deficiency	
<b>I.#</b>	Intersection Number	Geometry	Safety
<b>R.#</b>	Roadway Segment Number	Access Management	Traffic Operations