

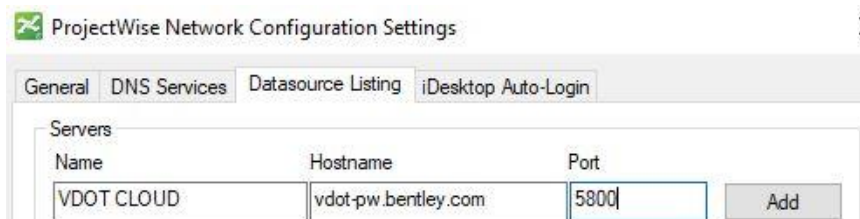
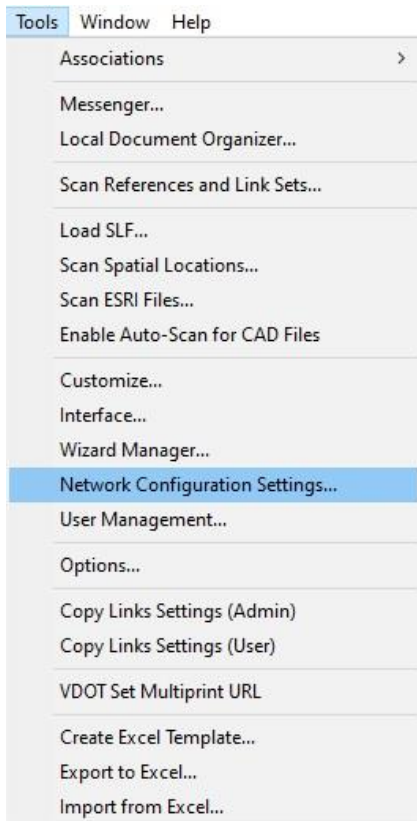
ProjectWise – Connection to Cloud Datasource

VDOT will be migrating the production ProjectWise datasource from on premise to Bentley cloud hosted environment on the 9/24/2021 weekend Please note with this change allows you to go straight to the datasource and not have to enter the COV network via the Gateway.

****You must** be logged into Connection Client to access the new datasource. Your connection is based off of your email address on file (Bentley IMS federation).

You must be an administrator on your machine to perform this change or have a newer version of ProjectWise Explorer installed that allows you to change the settings or running the registry key to establish this connection.

In ProjectWise Explorer go to *Tools* and then scroll down to *Network Configuration Settings*.



ProjectWise – Connection to Cloud Datasource

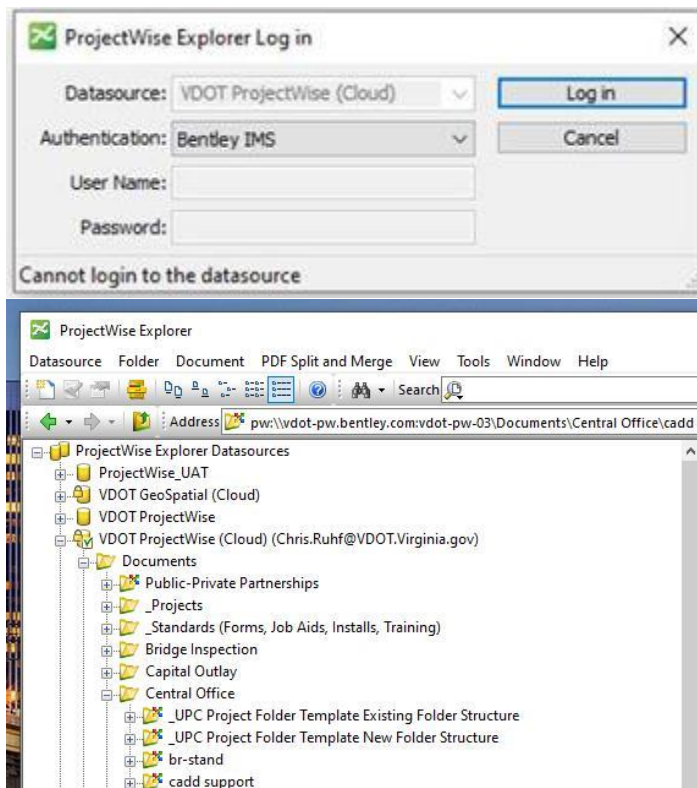
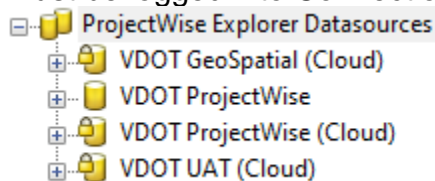
When the ProjectWise Network Configuration Settings pops up, click on the *Datasource Listing* Tab.

Fill in the fields as seen above.

Name: **VDOT CLOUD**
Hostname: **vdot-pw.bentley.com**
Port: **5800**

Click *Add* then the *Save* button.

If it's accepted close and reopen PW Explorer and you should see three (3) new (Cloud) datasources. Change the Authentication Tab to *Bentley IMS* then *Log In*. Your login is now your email address on file with Bentley, not COV/User.name. **Reminder you must be logged into Connection Client.



If you receive an administrative rights box you won't be able to address this. Please contact your IT staff and they can install the registry key that you will need to get running. Contact caddsupport@vdot.virginia.gov and we'll email you the registry key if it not available.