




NOTES:

- Drawing Not To Scale
- All signs shall be installed on STP-I posts and foundations.
- All sign locations will be field marked by Traffic Engineering staff upon request of the Residency.
- M Series signs shall be white and black. Unless otherwise noted, all other M-series and W-series signs shall be orange and black.
- Signs mounted on Type III barricades shall not cover more than 50% of the top barricade rail. The remaining two rails shall not be covered by a sign at all.

POST INFORMATION

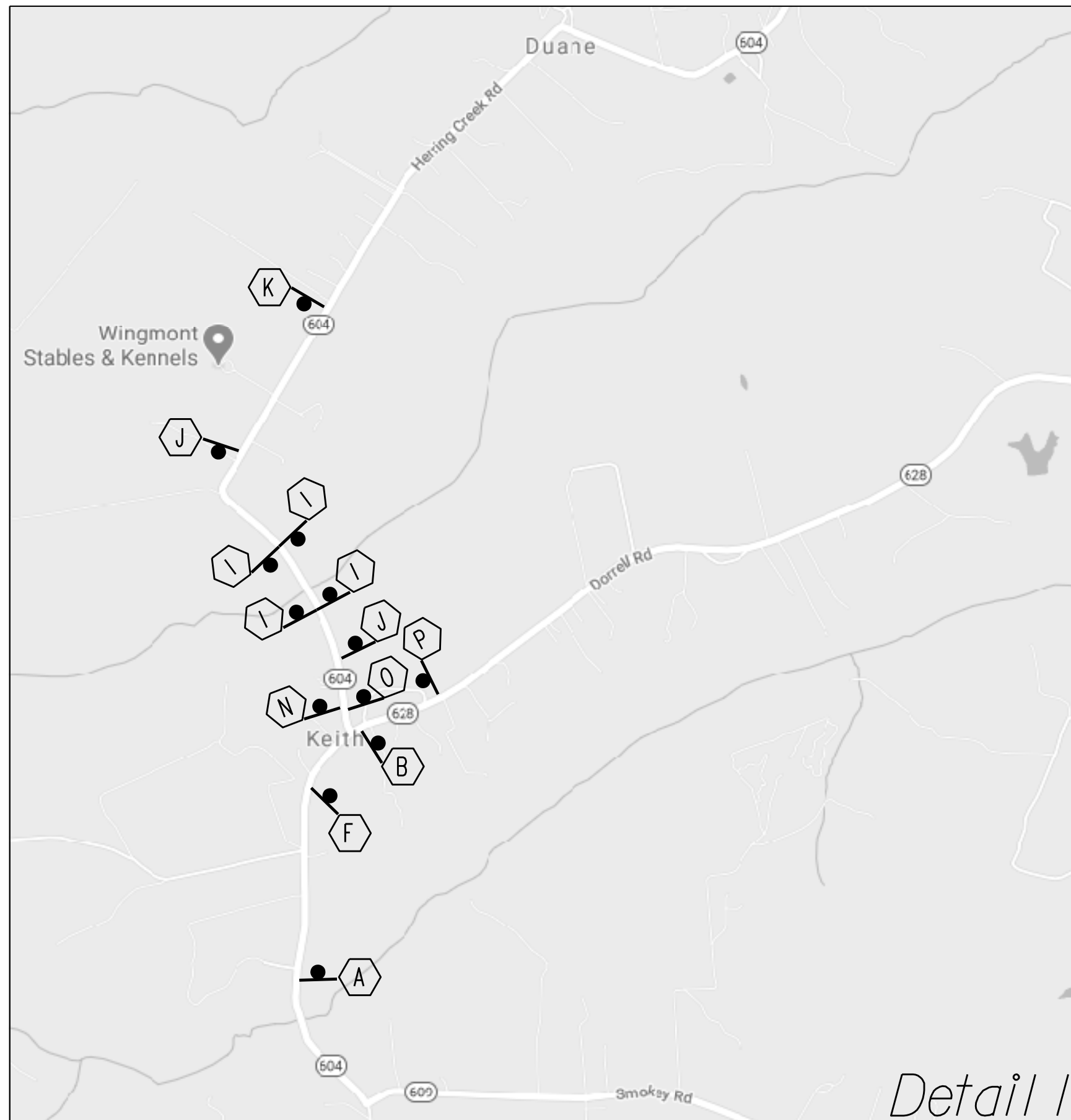
- Install assemblies "A", "J" and "K" on a 2 1/2" 12ga. steel post with a Type "A" foundation.
- Install assemblies "B", "C", "D" and "P" on a 2" 14ga. steel post with a Type "A" foundation
- Install all other sign assemblies on a 2 1/2" 10ga. steel post with a Type "B" foundation and a 6' 2 3/16" inner sleeve.


 COMMONWEALTH OF VIRGINIA
 PETER ANDREW HEDRICH
 Lic. No. 048203
 PROFESSIONAL ENGINEER
 VDOT Traffic Engineering
 Fredericksburg, Virginia
 TRAFFIC ENGINEER

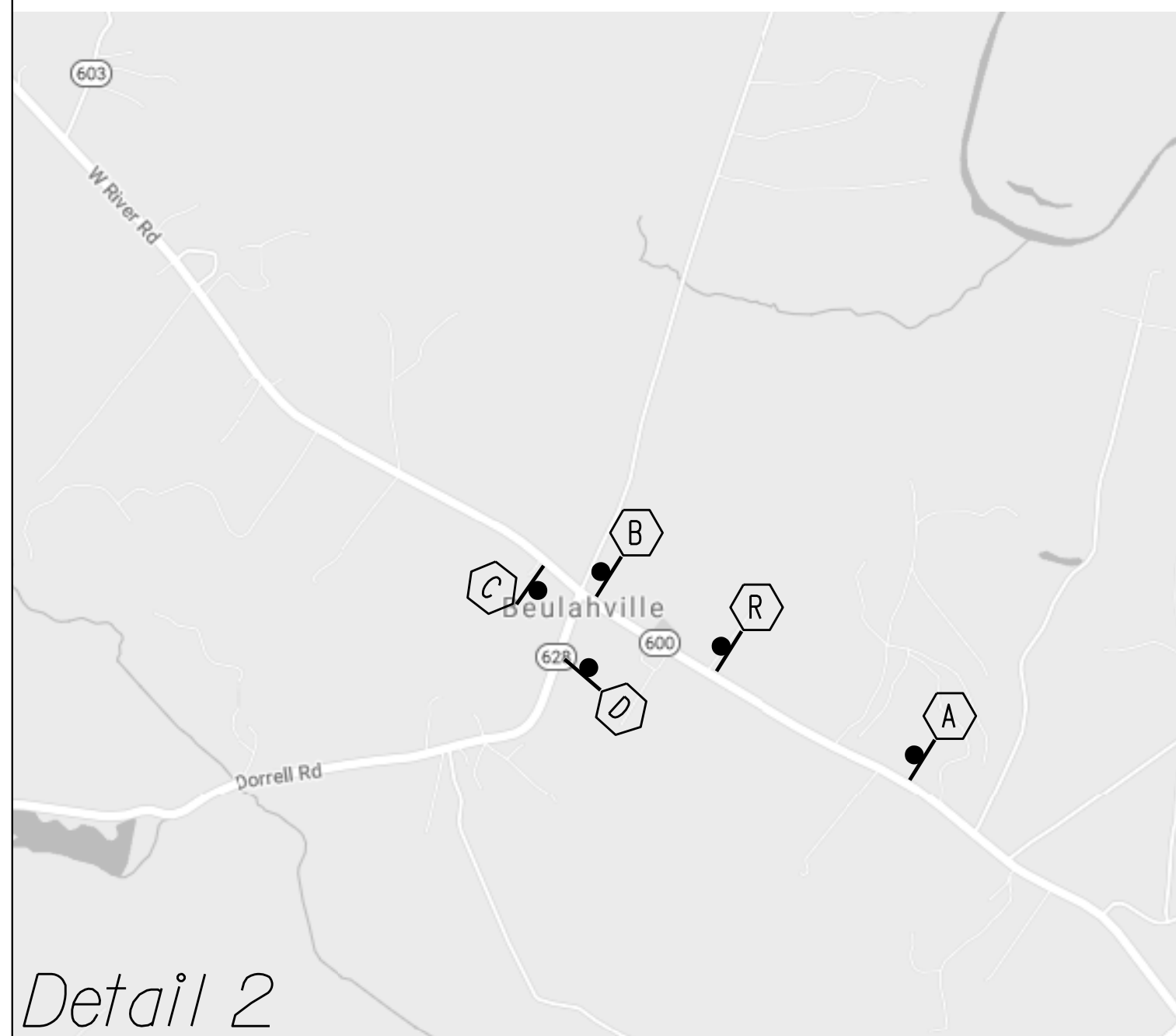
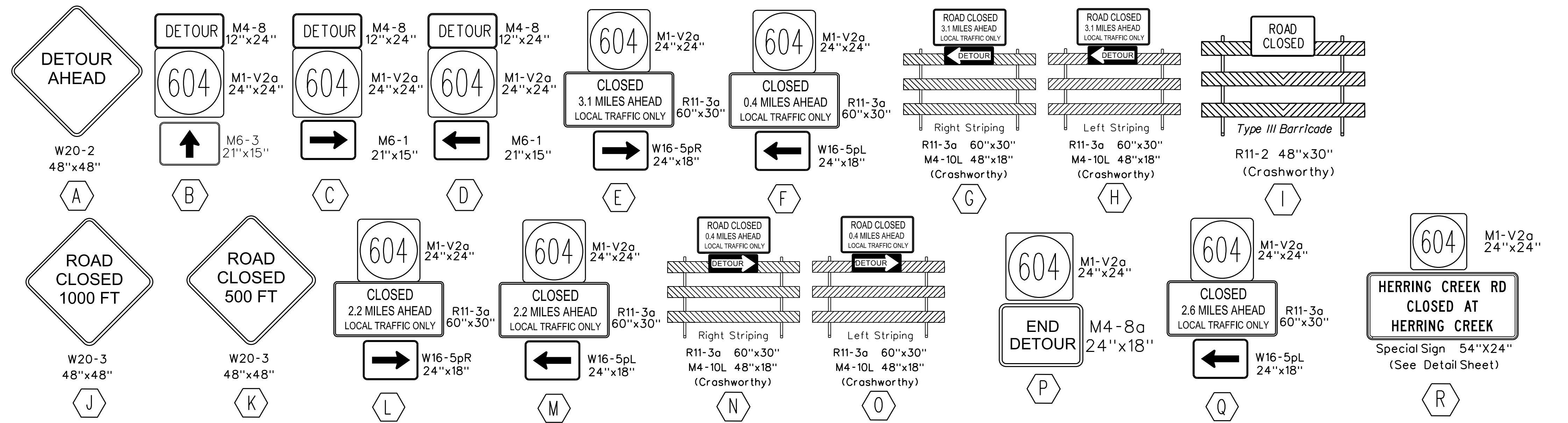
Designed By: Jeffrey Stone
 Drawn By: Jeffrey Stone
 Contact Person: Jeffrey Stone 540-899-4547
 County: King William
 Location: SR 604 Herring Creek rd.
 Reviewed By: Peter Hedrich
 File: TE Fredericksburg/King William/0600-0999/0604-Herring Creek Rd/
 0604-20210105-DET



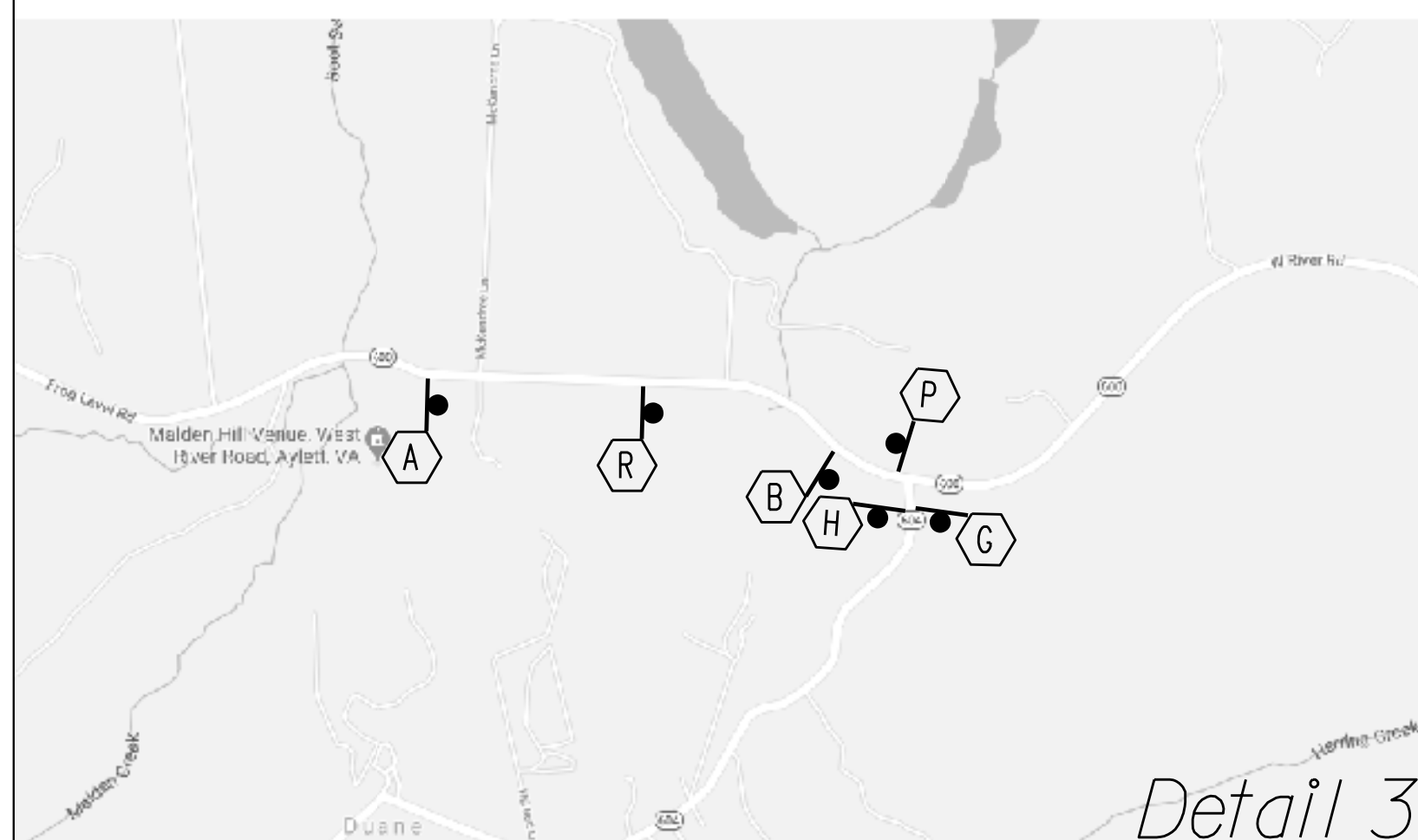
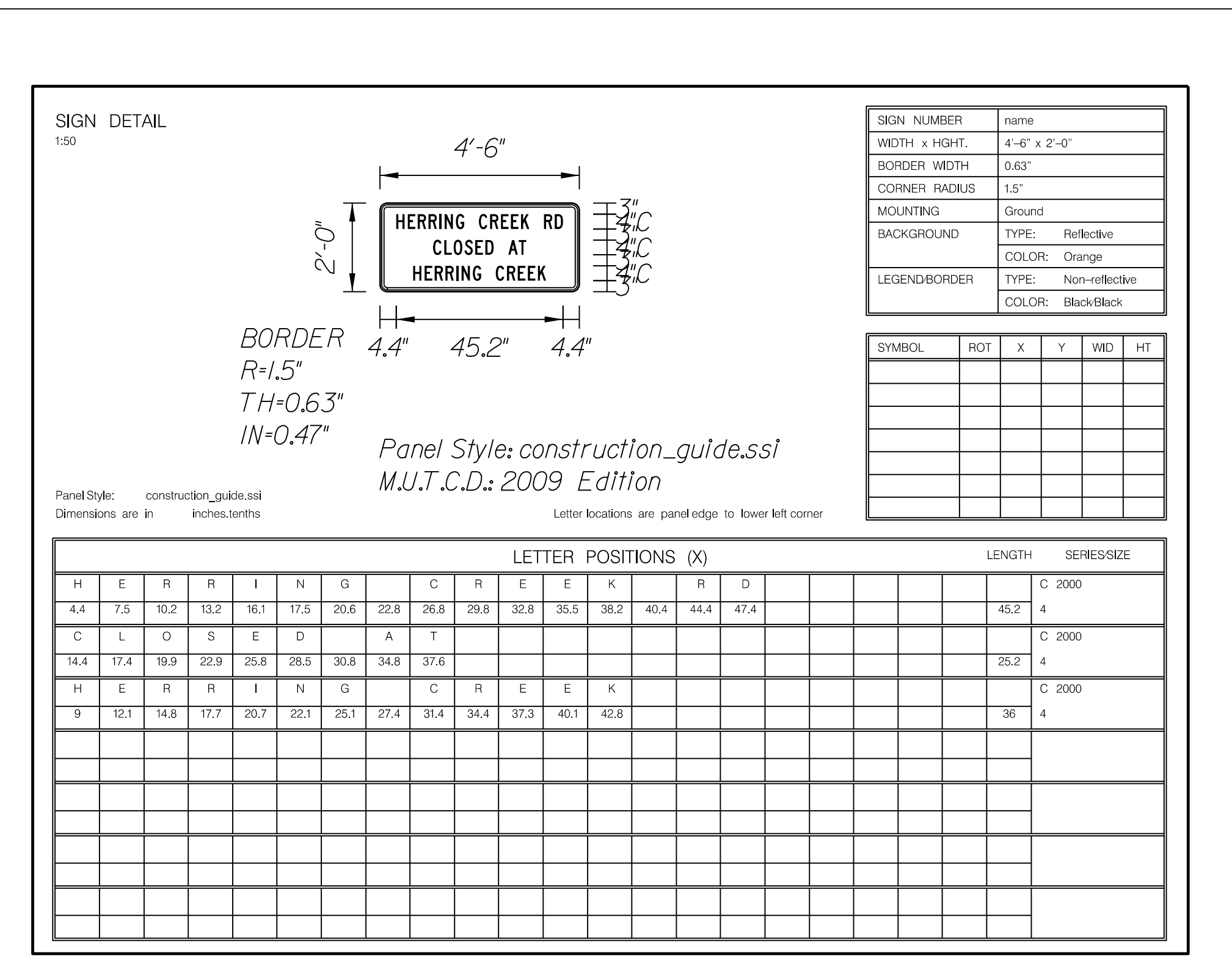
DATE INSTALLED: _____
 INSTALLED BY: _____
 Sheet: 1 of 2



Detail 1



Detail 2



Detail 3

Designed By: Jeffrey Stone
 Drawn By: Jeffrey Stone
 Contact Person: Jeffrey Stone 540-899-4547
 County: King William
 Location: SR 604 Herring Creek rd.
 Reviewed By: Peter Hedrick
 File: TE Fredericksburg/King William/0600-0999/0604-Herring Creek Rd/
 0604-20210105-DE1



DATE INSTALLED:

INSTALLED BY:

Sheet:
2 of 2