

Route 1 Multimodal Study – Task Force Meeting No. 1

MEETING SUMMARY

SUBJECT: Task Force Meeting 1
DATE/TIME: September 28, 2020, 6:30 - 8:30 PM
VIRTUAL: via Microsoft Teams

ATTENDEES: VDOT: Dan Reinhard, Lauren Mollerup, Nick Roper, Steve Bates, Jenni McCord
Arlington County: Dennis Leach, Sarah Crawford, Richard Best
Crystal City Citizens Review Council: Harmar Thompson, Christer Ahl
National Landing BID: Andy Van Horn, Tracy Gabriel, Matt Gerber, Robert Peck
Arlington Ridge Civic Association: Arthur Fox, Mike Pickford
Aurora Highlands Civic Association: Darren Buck
Crystal City Civic Association: Eric Cassel, Carol Fuller
Arlington County Planning Commission: James Schroll
Arlington County Transportation Commission: Chris Slatt
Arlington County Bicycle Advisory Committee: Steve Offutt, Dana Bres
Arlington County Pedestrian Advisory Committee: Pamela Van Hine
Arlington County Transit Advisory Committee: James Davenport
MWAA: Mike Hewitt
WMATA: Jim Ashe
City of Alexandria: Chris Ziemann
National Park Service: Laurel Hammig
Kimley-Horn: John Martin, Geoff Giffin, Danielle McCray

SUMMARY OF DISCUSSION:

1. Welcome and Introductions
Dan Reinhard (VDOT Project Manager) welcomed the group and facilitated introductions of the different agencies represented.
2. Presentation
VDOT and project team presented a prepared slide deck for the Task Force Meeting. *Please refer to the copy of this meeting presentation is attached to this meeting summary, which was used to cover the following topics:*
 - A. Reason for the project, project background, goals, scope, and schedule
 - B. Crystal City Task Force and Task Force meeting topics
 - C. Public Outreach strategy

3. Discussion

After the formal presentation, a discussion period was held where Task Force members asked the following questions and the Project team provide responses. The following is a summary of those questions and responses.

- A. Question: Are you going to consider numerous ideas and concepts? Such as putting Route 1 underground?
Response: While the Route 1 Multimodal Study is focused on at-grade alternatives, the study team will also compare improvement alternatives against the existing configuration and the concepts presented in the Crystal City Sector Plan. This approach does not preclude different options being considered in the future. This study will focus on at-grade intersections to get a handle on the cost and constructability associated with these options. Undergrounding Route 1 will be examined during this study; however, challenges will include the Metro tunnel, existing utilities, and the many below-grade parking garages.
- B. Question: If the option is to evaluate the Crystal City Sector Plan and At-Grade concepts, then I will probably not support the recommendations. What multimodal factors/tools will be used to consider bicyclist and pedestrians?
Response: Different measures of effectiveness will be used to assess bicyclist and pedestrian activity in the study area. Pedestrian delay will be evaluated at signalized intersections. VISSIM microsimulation tool will be used. Additionally, bicycle level of traffic stress will be used to evaluate comfort level of cyclists.
- C. Question: With Route 1 having so many different transportation choices, how are you going to consider mode shifts between today and the future analysis year?
Response: The study will consider mode shifts and we plan to use an analysis similar to the Crystal City Sector Plan. As the sidewalk and bike networks are complete there will be infrastructure in place to encourage that shift in mode split (from auto-centric to walking, biking, and transit options). Also, policies developed by the County and developers (such as parking management strategies) will have a positive impact on the mode shift.
- D. Comment: The Crystal City Sector Plan is nearly 10 years old now. Including Pentagon City will provide a more holistic view of the area. Amazon creates an opportunity for connecting the communities and an at-grade solution will help support this that vision. As you consider improvements, consider other cities who are tackling similar challenges successfully such as Seattle, Washington.
Comment noted.
- E. Question: What is your definition of an urban boulevard, and how do you envision this street will look?

Response: An urban boulevard is a street that compliments the adjacent land uses and fits into the context of the urban fabric. Streetscape elements would be used to accomplish the urban design. Users should not feel overwhelmed with a highway feeling, instead, all types of users should be able to comfortably travel along and across the corridor.

- F. Question: Amazon was not considered at that time of the Crystal City Sector Plan. Modifying Route 1 to be at-grade will remove ramps and excess land parcels will become available. Potential uses may vary, and the space could serve as pop-up retail, parks, etc. Will this study process consider land uses of the land parcels that become available?

Response: This study will identify land areas that may become available. The land use planning is inherently a separate process that would be led by Arlington County.

As a follow-up, what is the process for transferring the VDOT-owned land?

Response: The process of transferring land will be determined at a later time after identifying what land areas may become available. The Federal Highway Administration has an accepted process for transferring excess right-of-way.

- G. Question: How will this study reach out to larger organizations and agencies such as the Metropolitan Washington Airports Authority (MWAA), Pentagon, and the City of Alexandria?

Response: The Task Force is intended to facilitate input from the larger organizations. Representatives from each of those organizations are members of this Task Force. The project team will work closely with members of the Task Force to understand potential impacts to respective facilities.

- H. Comment: This is an exciting study for the potential to connect the neighborhoods. Also, the opportunity to improve pedestrian experience at 23rd Street across Route 1. *Comment noted.*

- I. An important part of the study should be to forecast the number of people that will be in the 22202 zip-code in 25 years. Perhaps the Metropolitan Washington Council of Governments (MWCOG) or the Transportation Planning Board (TPB) could help this forecasting. How will this study identify the number of people in the area in 25 year or 10 years?

Response: The study is considering "person trips" in the future years of 2025 and 2040. The project team will work closely to obtain socioeconomic data include households and employment estimates from MWCOG data and from Arlington County.

- J. Comment: Eads Street is an attractive alternate route to Route 1 that is used regularly. The study area should be extended to include Eads.

Comment noted. The transportation analysis will include Eads Street.

- K. Question: How was the decision made to consider changes to the 15th Street and 18th Street at Route 1, but not 12th Street and the Airport Access Road (Route 233)?
Response: At 12th Street, it would be geometrically challenging to lower the street from I-395 over the short distance. Additionally, 12th Street is planned for Crystal City Transitway, and there's a desire to keep the underpass at 12th Street. Similar vertical grade challenges exist at the Airport Access Road, especially with regards to the railroad track crossing. Converting the Airport Access Road to at-grade would also likely require changing the railroad track crossing to at-grade as well, which is not feasible due to the significant rail traffic that will occur with the Atlantic Gateway and Long Bridge project.

As a follow-up, can you clarify the statement about the airport access? Is that mostly focused on vehicle access?

Response: Railroad constraints at this location make it very difficult to create an at-grade crossing for any mode of transportation, especially with the planned increase in rail traffic.

- L. Question: How will this study measure safety? Will the presentation slides be available?
Response: The project team will review existing crash data to identify areas with safety concerns. The Highway Safety Manual will be used to defined safety benefits associated with proposed countermeasures. Additionally, slowing vehicle speeds with proposed improvements will be a safety benefit. Yes, the Task Force Meeting presentation and meeting summary will be posted to the project website.
- M. Comment: JBG hired transportation and economic consultants to consider impacts of different alignments through Route 1. Different alignments influence how to successfully finance. JBG would be glad to share the data and study.
Comment noted. The VDOT study would appreciate reviewing this data.
- N. Question: The Crystal City Sector Plan analyzed burying Route 1 and decided that the expense prohibited pursuing that concept further. Have you looked at that concept again?
Response: The study will consider this concept at a high level.
- O. Comment: A group of residents in the 22202 zip-code have formed a working group named Livability 22202 to study Route 1. The next working group meeting is on Wednesday September 30th 7-9PM via livestream. The working group will present results of a recent survey and the BID will present a study of Route 1.
Comment noted.
- P. Comment: Thank you for this process and forum. COVID-19 has fundamentally changed the way we travel. There will be long term shifts, more virtual work, and less

transit usage due to safety concerns. There will be more pedestrian activity with H2O coming with employment opportunities and more people working from home in this area. The at-grade concept is more attractive because of the walkability and removes the “divide” that Route 1 currently presents for Crystal City and Pentagon City.
Comment noted.

- Q. Question: As part of the Livability 22202 group, data is available. Can this data be shared to help all parties make the best decision for Route 1?
Response: The project team will present data at each milestone. Technical analysis and reports will be made available to the public on the project website. The project team welcomes the data from studies or analysis completed by others. Additionally, VDOT can participate in future meetings, as requested.
- R. Comment: South of 23rd Street there are a lot of curb cuts and driveways, particularly driveways to dumpsters. It would be helpful to clean up these curb cuts.
Comment noted.
- S. Comment: This is an exciting project. The biggest concern for the City of Alexandria is vehicle backups on northbound Route 1 into the City.
Comment noted.

4. Next Steps

- Project Team will launch MetroQuest survey mid to late October 2020
- Task Force members are encouraged to:
 - o Sign-up for the project email distribution list at www.virginiadot.org/route1multimodalstudy
 - o Promote and distribute the fall survey
- Next Task Force Meeting – December 2020

Attachments

Route 1 Multimodal Task Force Meeting No. 1 – September 28, 2020 Slide Deck (PDF)

Route 1 Multimodal Improvements - Northern Virginia District

Crystal City Task Force Meeting No. 1

September 28, 2020



Tonight's Agenda

- Introductions
- Reason for Study, Project Background, Goals, Scope
- Crystal City Task Force
- Study tasks and schedule
- Multimodal transportation analysis
- Concept planning approach
- Task Force meetings and public engagement approach
- Wrap-up

Commonwealth of Virginia Commitment

Memorandum of Understand (MOU) between Commonwealth and Amazon.com Services, Inc.

- Definitions:

“Transportation Projects” include *“mutually agreed upon improvements to Rt. 1...”*

- Section 5 – Transportation Projects:

... Commonwealth commits its best efforts, in collaboration with local officials in the Eligible County, to expeditiously evaluate and implement opportunities to improve safety, accessibility, and the pedestrian experience crossing Rt. 1 ...

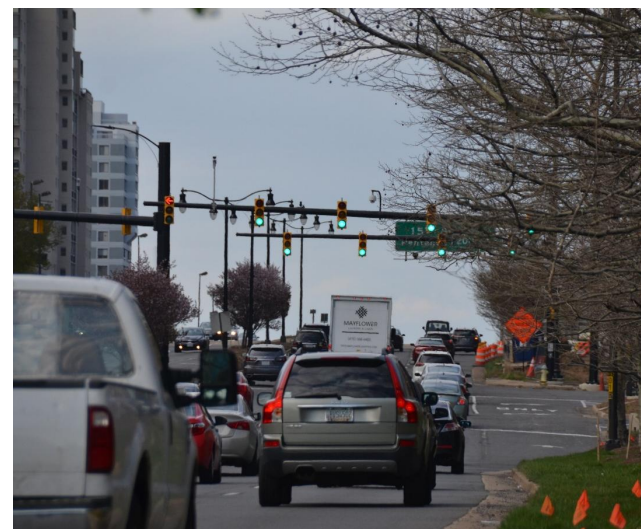
Reason for this study

This study is to identify enhanced multimodal connectivity and accommodations along and across Route 1 in Crystal City, to meet the changing transportation needs of this growing urban activity center. The need for this study is two-fold:

- Multimodal transportation demand is increasing from the creation of an additional Amazon U.S. Headquarters (HQ2) and other ongoing development in the Crystal City and Pentagon City area
- These areas are already heavily developed with limited space for expanding the footprint of the transportation network

Route 1 Corridor

- Evolving
- Dynamic
- Urban
- Multimodal
- Growing
- Transit-friendly
- Active
- Ped-, bike-, and scooter-friendly
- Busy!



Previous Planning: Crystal City Sector Plan



- Route 1 urban boulevard with land uses fronting street
- The current Route 1 feasibility study will examine at-grade, existing elevated, and Sector Plan configurations
- Sector plan: https://arlingtonva.s3.amazonaws.com/wp-content/uploads/sites/5/2014/03/sprc_Jul3012_SectorPlan_CrystalCityPO.pdf

Study Goals

- 1. Safety** – *improve multimodal safety for pedestrians, bicyclists, micro mobility modes, transit and vehicles along and crossing Route 1*
- 2. Multimodal Accessibility and Accommodation** – *increase multimodal accessibility and accommodation along and crossing Route 1 – pedestrians, bicycles, transit, vehicles (and any other mode)*
- 3. Transit Effectiveness** – *make transit more accessible, reliable, and convenient*
- 4. Vehicular Operations** – *maintain an appropriate level of vehicular operation and accommodation along Route 1 and on intersecting streets—15th Street, 18th Street, 20th Street, and 23rd Street*
- 5. Environmental** – *preserve, protect, or enhance the built, natural, visual, and social environments*
- 6. Urban Fabric** – *integrate Route 1 with the urban fabric of Crystal City and Pentagon City*

Study Scope

- Study of Route 1, from approximately 12th Street to 23rd Street South
 - Explore at-grade urban boulevard feasibility
 - Review and compare potential improvements to the current elevated condition and the urban boulevard described in the [Crystal City Sector Plan](#)
- Feasibility study which aims to provide sufficient information to make the best decision on a future project on Route 1 in Crystal City
- At-grade urban boulevard focus because it is unusual and extremely complex.

Crystal City Task Force

- Study includes the formation of a task force to receive feedback from the community
- Task force is in addition public meetings where feedback will also be received
- Members of the task force expected to represent their organizations so the study team can proactively address any community issues, thereby making the public meetings as efficient and meaningful as possible
- Task force members also expected to report back to their organizations and help to increase awareness of any upcoming public information gathering efforts or public meetings
- Request from VDOT and Arlington County to TF Members:
 - **Participate** in the Route 1 Multimodal Improvements study
 - **Provide feedback** to VDOT and Arlington County on study findings and recommendations
 - **Advocate** for input to the study from stakeholders and the general public

Crystal City Task Force

■ Members:

- Crystal City Citizens Review Council
- National Landing BID representatives (Board, staff, hotels, large business, small business)
- Arlington Ridge Civic Association
- Aurora Highlands Civic Assoc.
- Crystal City Civic Assoc.
- Planning Commission
- Transportation Commission
- Bicycle Advisory Committee
- Pedestrian Advisory Committee
- Transit Advisory Committee
- MWAA
- WMATA
- City of Alexandria
- National Park Service

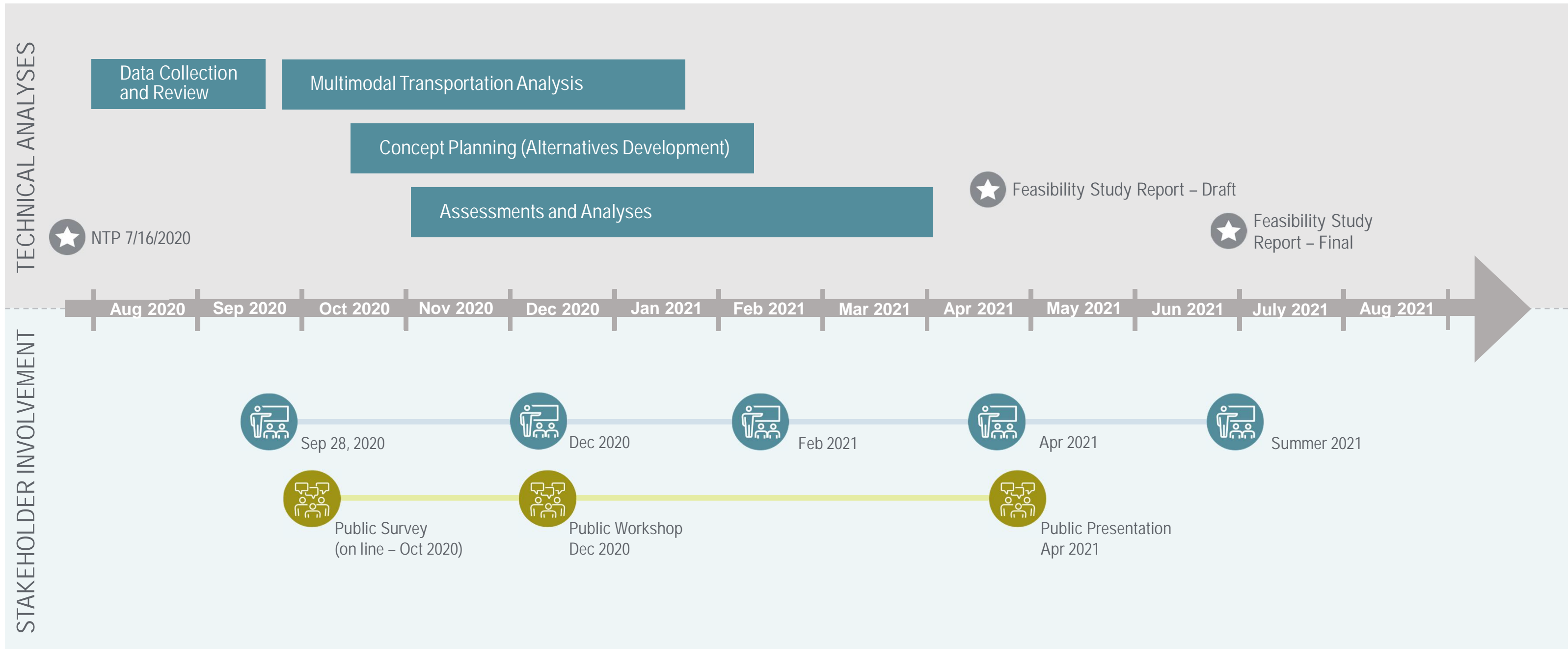
THANK YOU!!!



Crystal City Task Force – Ground Rules for Meetings

- Treat all meeting participants with respect.
- One person speaks at a time.
- Give everyone a chance to participate equally; avoid dominating.
- Listen as an ally, not an adversary; everyone should feel comfortable expressing their opinion, regardless of differences.
- Ask for clarification; don't assume you know what someone means.
- Do not characterize others' views in or outside a group's meetings.
- For virtual meetings...
 - Go on mute when not speaking.
 - Use “Chat” feature to ask questions, provide comments, help catalogue ideas

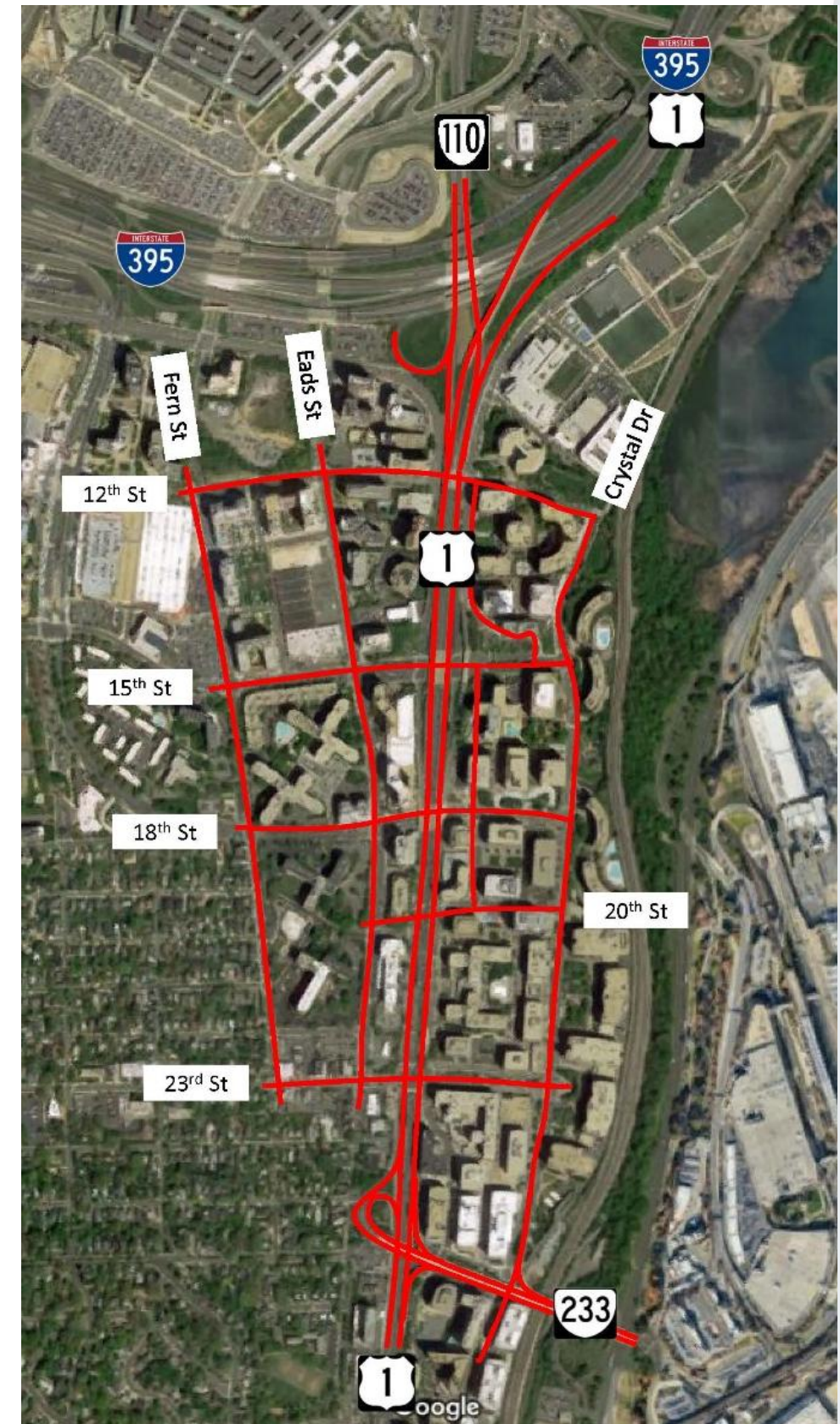
Study Tasks and Schedule



Multimodal Transportation Analysis

- Existing conditions analysis
- Traffic forecasting - years 2025 and 2040
- Future no build conditions analysis
- Future build conditions analysis
- Safety analysis

Analysis Study Area →



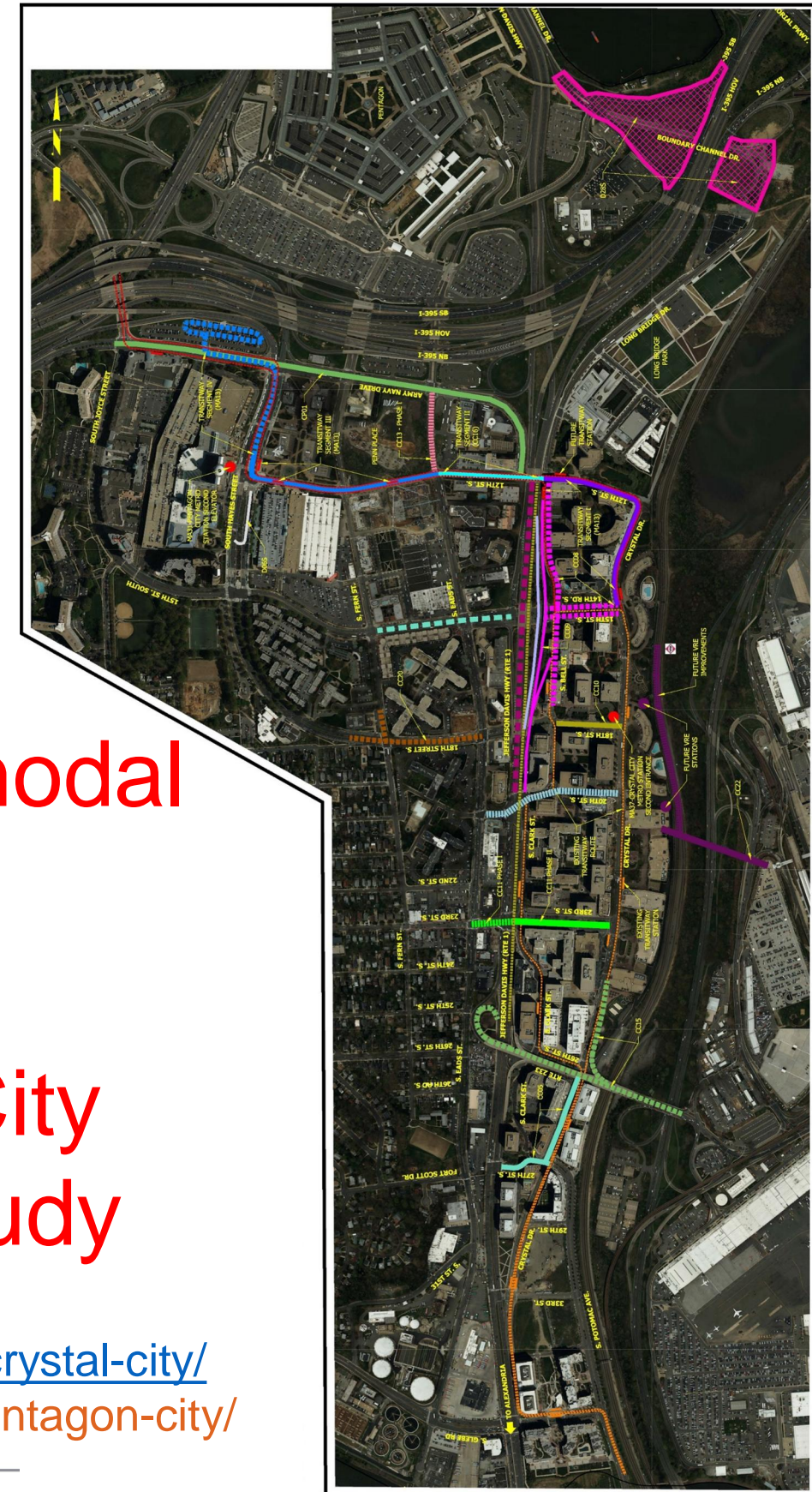
Coordination with on-going and planned projects

- Arlington County multimodal projects + Pentagon City Planning Study
- Private development projects
- Regular coordination with Arlington County staff
 - Data sharing
 - Confirming assumptions
 - Coordinating community outreach

Arlington County projects

Project Legend

-  CC09 - Clark Street Demolition
-  CC05 - 27th Street S and Crystal Drive 2-Way Conversion
-  D06S - Pentagon City Multimodal Phase II
-  MA13 - Transitway Segment I - 12th Street S
-  CC13 - S Eads St Improvements - Phase I
-  CC11 - 23rd Street S - Phase I
-  CC20 - 18th Street S Improvements
-  D28S - Boundary Channel Drive (VDOT Design Build)
-  CC08 - 15th Street S - Clark-Bell Extension
-  CC11 - 23rd Street South - Phase II
-  CP01 - Army Navy Drive
-  CC16 - Transitway Segment II - 12th Street S
-  MA13 - Transitway Segment III - 12th Street S
-  CC15 - National Airport Off-Ramp
-  CC10 - 18th Street S - Bell to Crystal Drive
-  20th Street S - Crystal Drive to S Eads St
-  15th Street S Complete Streets Project
-  Route 1 Pedestrian Improvements
-  Route 1 Ramps at 15th Street S
-  CC22 - CC2DCA Pedestrian Bridge
-  Route 1 At-Grade (VDOT)
-  MA13 - Transitway Segment IV (Operations Only)
-  Existing Transitway Route
-  Future Transitway Route
-  Existing Transitway Station
-  Future Transitway Station

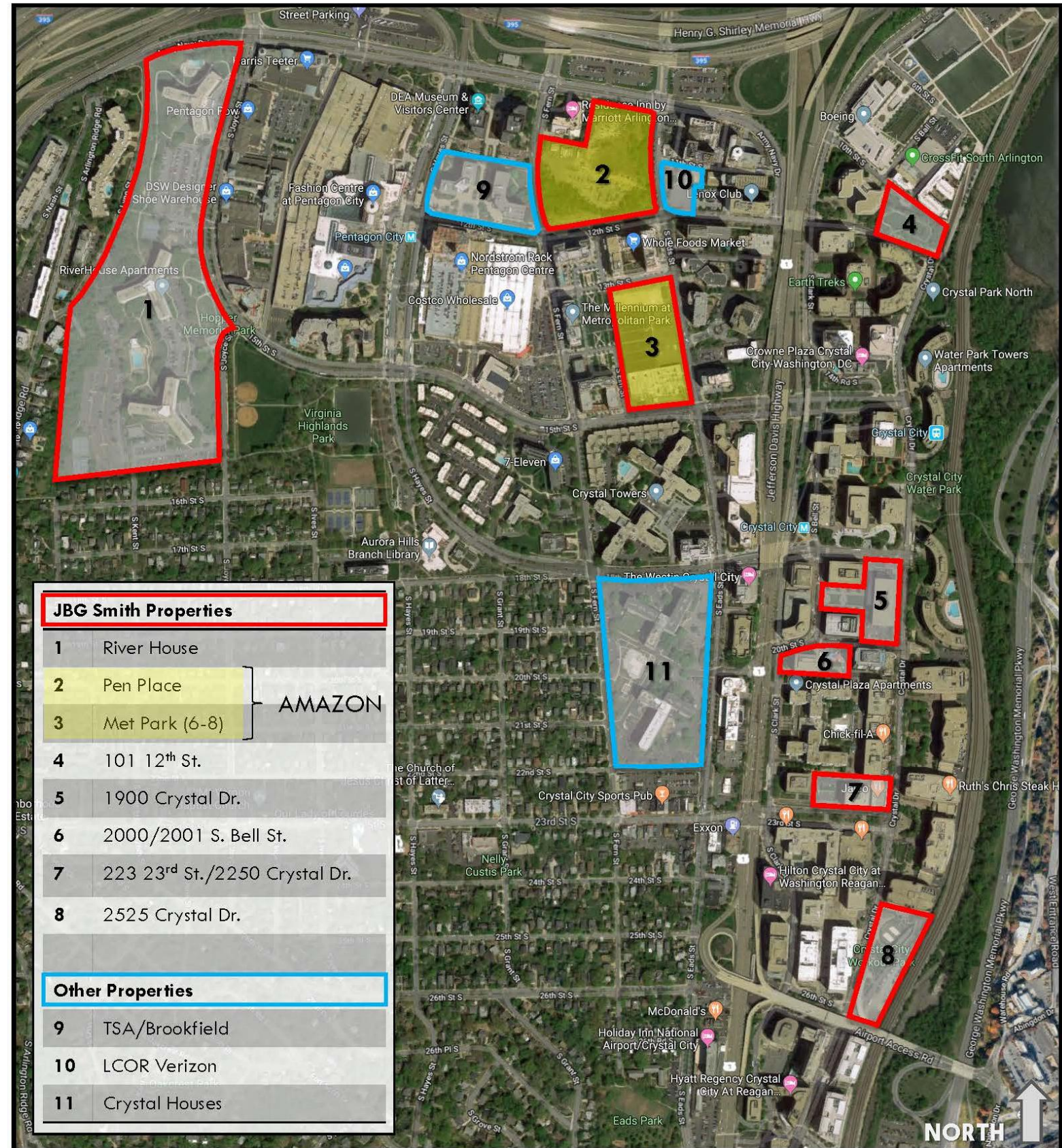


Lots of multimodal projects!!
+
Pentagon City Planning Study

<https://projects.arlingtonva.us/projects/crystal-city/>
<https://projects.arlingtonva.us/projects/pentagon-city/>

Development Projects

JBG Smith Properties	
1	River House
2	Pen Place
3	Met Park (6-8)
} AMAZON	
4	101 12 th St.
5	1900 Crystal Dr.
6	2000/2001 S. Bell St.
7	223 23 rd St./2250 Crystal Dr.
8	2525 Crystal Dr.
Other Properties	
9	TSA/Brookfield
10	LCOR Verizon
11	Crystal Houses



JBG Smith Properties	
1	River House
2	Pen Place
3	Met Park (6-8)
} AMAZON	
4	101 12 th St.
5	1900 Crystal Dr.
6	2000/2001 S. Bell St.
7	223 23 rd St./2250 Crystal Dr.
8	2525 Crystal Dr.
Other Properties	
9	TSA/Brookfield
10	LCOR Verizon
11	Crystal Houses

Concept Planning

- Plan and profile studies
 - Cross sections
 - Alignments
 - Constructability
- Development of alternatives
 - Multimodal mobility assessment
 - Conceptual stormwater management strategy
 - Conceptual cost estimates
 - Redevelopment potential assessment
- Feasibility study report

Concept Design Study Area →

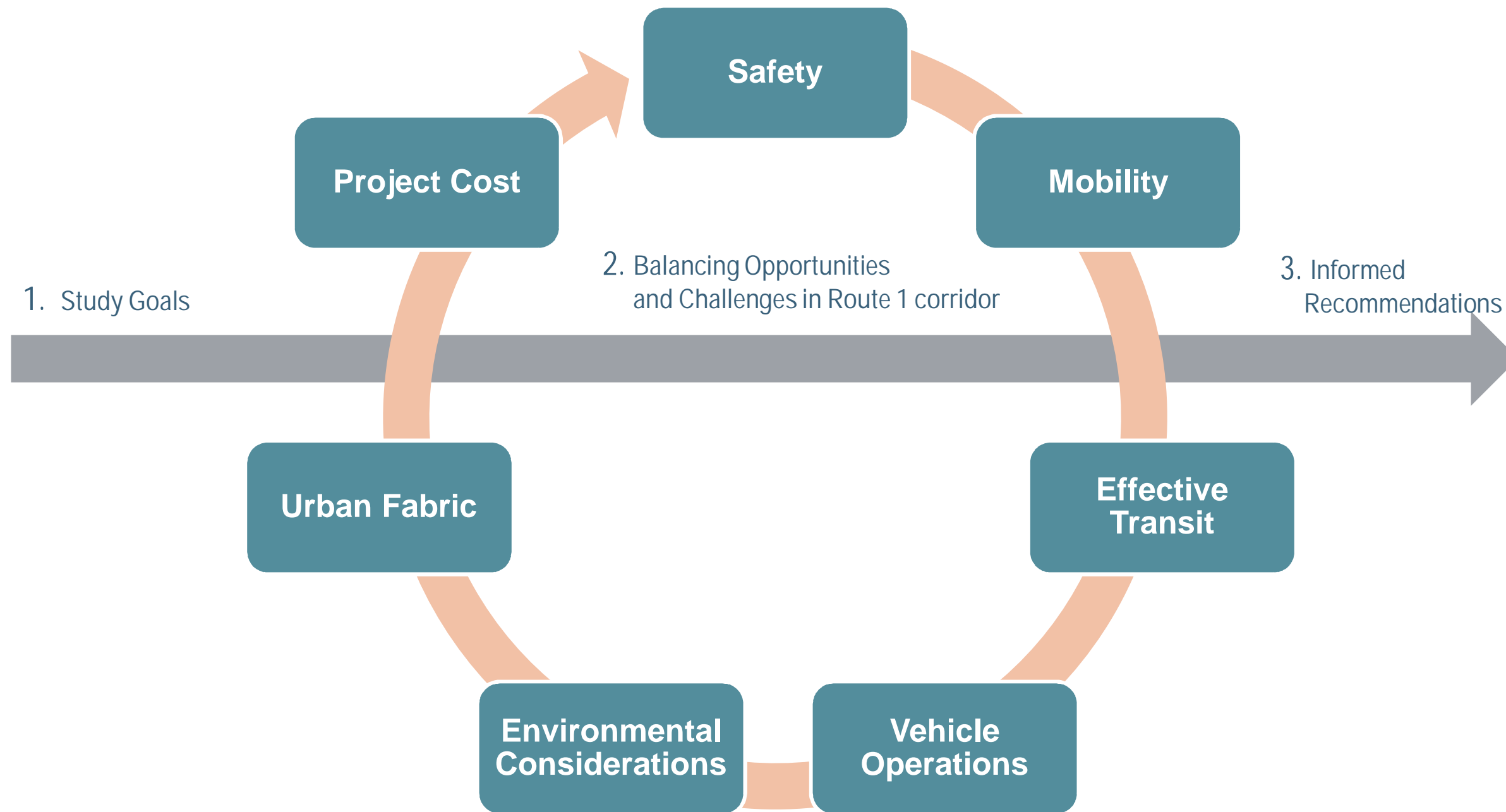


Building upon Crystal City Sector Plan

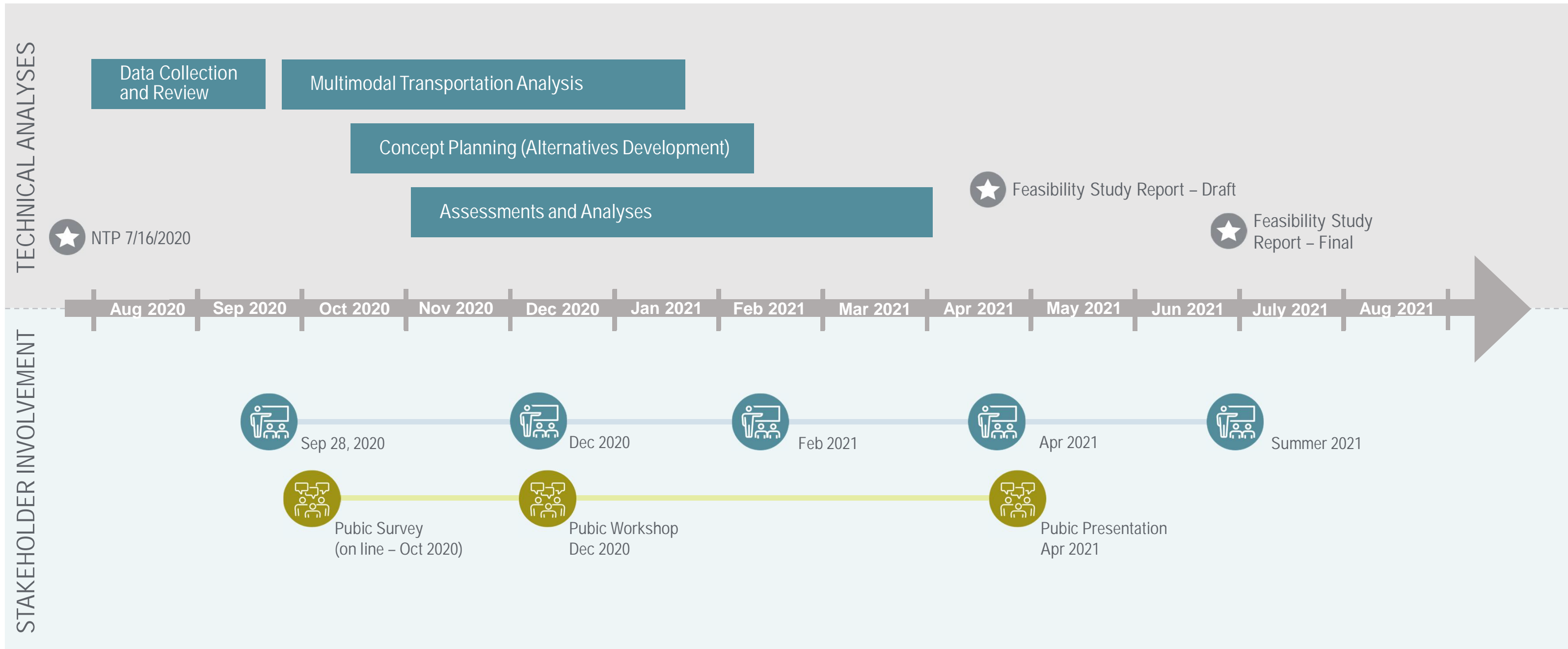
- Comprehensive land use and multimodal transportation study with implementation strategies and timelines
- Plan included extensive public participation
- Planning effort has led to implementation of projects by public sector and private companies
- VDOT study looking at at-grade urban boulevard, potential improvements to the current elevated conditions, and the elevated urban boulevard from Sector Plan



Concept Design / Alternatives Analysis



Study Tasks and Schedule



Task Force Meetings

- **Meeting No. 1 (September 28, 2020):** Study overview, schedule, milestones, public involvement plan, Task Force expectations
- **Meeting No. 2 (December 2020/January 2021):** Review of public survey input, existing conditions analysis, future no build analysis, and initial concepts; prep for Public Workshop
- **Meeting No. 3 (February 2021):** Review of Study Workshop input; review of multimodal analysis, concept plans, initial feasibility analysis findings
- **Meeting No. 4 (April 2021):** Presentation of Draft Report/Recommendations; prep for Public Presentation of Draft Report/Recommendations
- **Meeting No. 5 (June 2021):** Presentation of Final Report/Recommendations

Public Engagement

- **Phase 1 (Fall 2020):** MetroQuest survey
- **Phase 2 (December 2020):** Workshop setting (virtual) for discussion and input on early study concepts
- **Phase 3 (April 2021):** Presentation/discussion of draft feasibility study report findings and recommendations

Fall 2020 Outreach – Online Survey

■ Purpose

- Gauge community preferences and priorities
- Evaluate possible study outcomes

■ Topics

- How you experience traveling Route 1 in Crystal City
- Challenges and Opportunities to improve access by walking, bicycling, taking transit, or driving
- Design Priority – Rank Top 5 design elements
 - Traffic Safety and Efficiency
 - Pedestrian Safety
 - Bicycle Safety
 - Public Transit
 - Travel Time Reliability
 - Environmental
 - Urban Fabric
 - Other

■ Timing

- Survey to start mid-October 2020, conclude mid-November
- Results will be available late November

Study website:

https://www.virginiadot.org/projects/northernvirginia/route_1_multimodal_improvements_study.asp

DISCUSSION

Route 1 Multimodal Improvements - Northern Virginia District

Crystal City Task Force Meeting No. 1

September 28, 2020

